

Operating instructions with spare parts list

Tungsten Grinder

ESG Plus



Code 790 052 774

Machine-no:

All rights reserved, in particular the rights of duplication and distribution as well as translation.
Duplication and reproduction in any form (print, photocopy, microfilm or electronic) require the written permission of Orbitalum Tools GmbH.

Table of contents

	Page
0 About these instructions	1
0.1 Warning messages	1
0.2 Further symbols and displays	2
0.3 Abbreviations	2
1 Safety notes	3
1.1 Proper use	3
1.2 Safety regulations	3
1.3 Work safely	3
1.4 Waste disposal / environmental protection	4
1.5 Further safety regulations	4
2 Construction of the product	5
2.1 Standard	5
2.2 Accessories (optional)	6
2.2.1 Diamond grinding wheels	6
2.2.2 Cutting device	6
2.2.3 Electrode holder	6
2.2.4 Clamping collet	6
2.2.5 Wall/table/vice-mounting plate	7
2.2.6 Protective cover	7
2.2.7 Double-Decker Kit ESG ²	7
3 Characteristics and range of applications	8
3.1 Characteristics	8
3.2 Range of applications	8
4 Technical data	9
5 Commissioning	10
5.1 Scope of supply	10
5.2 Transportation	10
6 Operation	11
6.1 Switching on the ESG Plus	11
6.2 Grinding the electrodes	11
6.2.1 Combination of grinding angle and electrode diameter	12
6.2.2 Sharpening electrodes	12
6.2.3 Surface-grinding the electrode tip	13
6.2.4 Cutting the electrodes to length	13
6.3 Switching off the ESG Plus	13
6.4 Replacing grinding wheels	14
7 Assembly of the Double-decker Kit ESG ²	15
8 Maintenance	17
9 What to do if...?	18
9.1 Fault elimination	18
9.2 Servicing/customer service	18

10 Spare parts list	19
---------------------	----

0 About these instructions

To allow quick understanding of these instructions and safe handling of the machine, all the warning messages, notes and symbols used in these instructions are presented here along with their meaning.

0.1 Warning messages

In these instructions, warning messages are used to warn you against the dangers of injury or material damage. Always read and observe these warning messages!




This is a warning symbol. It should warn you against dangers of injury.

Follow all instructions which are identified with this safety symbol in order to avoid injuries or death.

Warning symbol	Meaning
 DANGER	Direct danger! Non-observance could result in death or critical injury. ⊙ Restrictions (if applicable). ► Measures to prevent danger.
 WARNING	Possible danger! Non-observance could result in serious injury. ⊙ Restrictions (if applicable). ► Measures to prevent danger.
 ATTENTION	Dangerous situation! Non-observance could result in minor injuries.
ATTENTION	Dangerous situation! Non-observance could result in material damage.

0.2 Further symbols and displays

Symbol	Meaning
Important Note	Notes: Contain particularly important information for comprehension.
	Instruction: You must take notice of this symbol.
1.	Request for action in a sequence of actions: You have to do something here.
▶	Single request for action: You have to do something here.
▷	Conditional request for action: You have to do something here if the specified condition is met.

0.3 Abbreviations

Abbr.	Meaning
ESG Plus	Tungsten Grinder

1 Safety notes

The Tungsten Grinder (called ESG Plus in this document) is state of the art. Any other use than that described in these instructions can lead to injury to the user or other persons. In addition the device or other objects can be damaged.

Therefore:

- Always ensure that the device is in good working condition, and always comply with these notes on safety.
- Keep the complete documentation close by the device.
- All regulations generally valid for the prevention of accidents must be observed.

1.1 Proper use

The ESG Plus is intended only to be used to process welding electrodes.

1.2 Safety regulations

- Only use the dimensions and materials quoted in these instructions. Other materials should only be used after consulting Orbitalum Tools customer service department.
- Only use authentic Orbitalum Tools spare parts and materials.
- Check the ESG Plus daily for any externally visible damage or defects. Have any damage or defects repaired immediately.
- Work on the electrical equipment should only be carried out by a qualified electrician.
- Only operate the ESG Plus if the electrical protective devices function.
- The tapped holes at the ESG Plus must always be free of dust, clean if necessary.
- Pull out the power plug before carrying out repair and maintenance work.

1.3 Work safely

"Play your part in ensuring safety at work."

- Report any changes in operating performance to the responsible person immediately.
- Carry out all work with an awareness of safety.



WARNING

- When working with the ESG Plus, wear protective goggles, safety gloves and breathing mask.
- Turn the device off at the end of each operating cycle.
- Before cleaning pull out the ESG Plus power plug and let the device coast.

Danger of being injured!

- ⊘ Keep hands away from the tool during processing.
 - ▶ Wear safety gloves.
-

1.4 Waste disposal / environmental protection

- Use a suction unit or an industrial-type vacuum cleaner to collect the grinding dust.

Discarded electric tools and accessories contain a large share of valuable raw and synthetic materials which can be recycled.

Therefore:

- Electrical (electronic) devices which are marked with the symbol to the left, may not be disposed of with household waste in accordance to the EU directive 2002/96/EC.
- By actively using the offered return and collection systems, you actively contribute to the reuse, recycling and utilization of electrical (electronic) devices.
- Electrical (electronic) used devices contain parts which must be handled selectively according to the EU directive. Separate collection and selective treatment is the basis for environment-friendly disposal and the protection of human health.
- Our products that were sold to you after August 13th, 2005 are taken back and treated according to legal standards. These products have to be send free of charge.
- The return of used devices which pose a health or safety risk for human beings due to soiling during use may be refused.
- The legally compliant disposal of electrical (electronic) devices that were placed on the market before August 13th, 2005 are in the responsibility of the end-user.



(RL 2002/96/EC)

1.5 Further safety regulations

Observe country-specific regulations, norms and guidelines.

2 Construction of the product

2.1 Standard



- 1 Motor
- 2 ON/OFF switch
- 3 Identification plate
- 4 ESG Plus grinding head
- 5 Fastening bolt head to motor

2.2 Accessories (optional)

2.2.1 Diamond grinding wheels



Exchangeable grinding wheel diamond-coated on both sides.

Version	Code
Standard	790 052 487
Rough	790 052 488

2.2.2 Cutting device



To cut tungsten electrodes to fixed length.

For electrode diameters 1.0; 1.6 and 2.4 mm (0.040; 0.060 and 0.095 inch).

Fixed cutting lengths: 12; 13; 15 and 17 mm selectable (0.470; 0.500; 0.600 and 0.670 inch). Other cutting lengths possible.

Code
790 052 513

2.2.3 Electrode holder



Without clamping collet.

Code
790 052 457

2.2.4 Clamping collet



For clamping the electrode into the holder.

Range [mm]	Range [inch]	Code
1.0 – 3.2	0.039 – 0.126	790 052 481

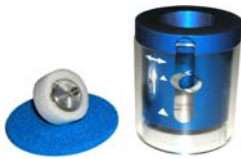


2.2.5 Wall/table/vice-mounting plate

Incl. 2 cylinder head screws (790 052 495).

Code

790 052 483



2.2.6 Protective cover

Easy to adapt on the ESG Plus head.
With integrated retainer for suction units.

Code

790 052 496



2.2.7 Double-Decker Kit ESG²

Possibility to use 2 different grinding wheels at the same time on one ESG Plus (scrubbing and smoothing).

Easy and fast assembly to the ESG Plus (see chapter 7, p. 15).

Including:

- 1 Grinding head
- 1 Diamond grinding wheel, rough
- 1 Cylinder head screw with collar (M4x34)
- 1 Shaft elongation

Code

790 052 490

3 Characteristics and range of applications

3.1 Characteristics

The ESG Plus is the perfect hand-held grinder for cutting, grinding and planing electrodes which are used in WIG or TIG welding machines.*)

The ESG Plus has the following characteristics:

- Electrodes and tips are sharpened to conform to recognized standards
- Replaceable grinding wheel diamond coated on both sides
- ESG Plus head for different electrode angles and electrode diameter
- Machine:
 - hand-operated
 - optionally wall/table/vice mounting plate possible
- Working instruction:
 - the electrode is inserted by hand into the corresponding opening and is ground round by a manual circular movement
- Drive:
 - A/C motor with the R.P.M. controlled electronically

*) Consider country-specific regulations, standards and guidelines when using tungsten electrodes with thorium.

3.2 Range of applications

Without refitting of the equipment.

Working range

ESG Plus	Electrode diameter					
	1.0 mm (0.04")	1.6 mm (0.06")	2.0 mm (0.08")	2.4 mm (0.09")	3.2 mm (0.13")	4.0 mm (0.16")
15°	X	X	X	X	X	X
18°	X	X	X	X	X	X
22.5°	X	X	X	X	X	X
30°	X	X	X	X	X	X

Electrode material Tungsten electrodes alloyed with zirconium, lanthanum and cerium.

Important Not to be used without suction for tungsten electrodes with thorium.

4 Technical data

Dimensions	Ø 65 x 350 mm Ø 2.560 x 13.780 inch
Weight complete with grinding wheel	approx. 1.4 kg
Power consumption	500 W
Voltage	230 V, 50-60 Hz 110 V, 50-60 Hz
Main supply cable	3 m 118 inch
Rotary speed	30.000 U/min (r.p.m.)
Power-on time	100%
Noise level in the workplace*)	Idle running approx. 83 dB (A)
Vibration level according to EN 28662, Part 1	2.5 m/s ²
Idle running of temperature development	10 min running time + 30 °C over running temperatur

*) Sound pressure level measurement was carried out under normal operating conditions according to EN 23741.

5 Commissioning

5.1 Scope of supply

- ▶ Check the delivery for completeness and any transportation damage.
- ▶ Report any missing parts or transportation damage to your supplier immediately.

Scope of delivery (subject to alterations)

- 1 Tungsten Grinder ESG Plus
- 1 Powder-coated carrying steel case
- 1 Diamond grinding wheel (790 052 487)
- 1 Tool to replace the grinding wheel
- 1 Operating instructions with spare parts list

5.2 Transportation

The ESG Plus is a portable, hand-operated machine. Special transportation aids are not required.



DANGER

Danger of death by electric shock!

Non-observance could result in death or critical injury.

- ▶ Cut off the power supply before transportation.
-

6 Operation

6.1 Switching on the ESG Plus

1. Connect the ESG Plus (consider main voltage).
2. Press the ON/OFF switch (1).

The ESG Plus starts.



DANGER

6.2 Grinding the electrodes

Hot dust!

Danger of injury to eyes!

- ⊙ Do **not** use thorium-coated tungsten electrodes without a suitable suction devices or a suitable breathing mask.
- ▶ Only work with safety goggles.
- ▶ Always wear a breather mask.

Note

Do not exert too much pressure on the grinding wheel, since otherwise the service life of the diamond wheel is shortened. The strength of the contact pressure, but even rotation of the electrode around its own axle and a small contact pressure of the electrode to the grinding produce a high sharpening achievement.



Important

Use a rough diamond wheel during larger sharpening achievement.

6.2.1 Combination of grinding angle and electrode diameter



15°



18°



22,5°



30°

6.2.2 Sharpening electrodes

1. Insert the electrode with the corresponding hole diameter and the desired angle until the grinding wheel is touched.
2. The electrode tip is sharpened evenly by turning the electrode slowly.

Note Slow and even rotating motion results in a good and exact sharpening result (longitudinal grind). If the electrode is not turned, then it is flat ground to the selected angle.

6.2.3 Surface-grinding the electrode tip



Precision ground point. Although able to grind flat land on tip.

- ▶ Insert the electrode (1.0 / 1.6 / 2.0 / 2.4 / 3.2 or 4.0 mm) through the openings at the front end onto the grinding wheel and square the electrode tip.

6.2.4 Cutting the electrodes to length



In order for the electrode rods to be used for e.g. orbital welding, or for manual welding, they have to be cut to length.

1. Insert the electrode into the lateral slot.
2. The electrode is cut evenly by turning the electrode slowly (optional cutting device for 12, 13, 15 and 17 mm, see chapter 2.2.2, p. 6).

6.3 Switching off the ESG Plus



- ▶ Press the ON/OFF switch (1).

The ESG Plus stops.

6.4 Replacing grinding wheels



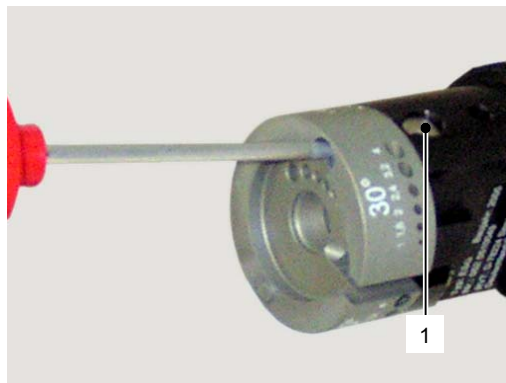
WARNING

Danger to injury to hands though unintentional activation of the ESG Plus!

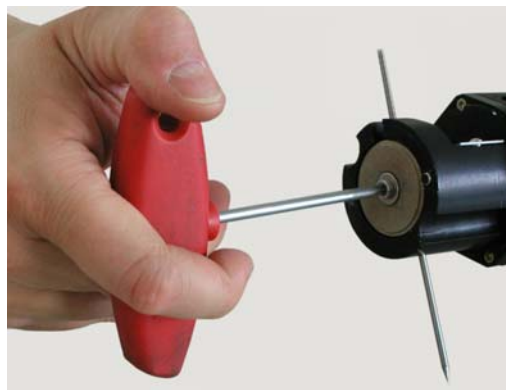
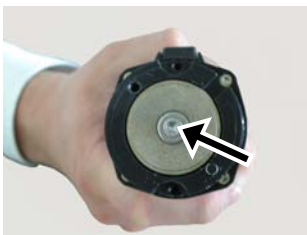
- ⊘ Do **not** switch on the ESG Plus while changing the grinding wheel.
- ▶ Pull out the power plug.

Disassembly of the ESG Plus head

1. Dismantle and remove the cylinder head screw with collar (M4x15) at the ESG Plus head. Do not remove the arrest nut (1).
2. Remove the ESG Plus head.



3. Slide a 2.4 mm pin through cross hole and motor shaft (rotation of the grinding wheel is prevented).
4. Loosen and remove the grinding wheel screw (cylinder head screw with washer M4x6).
5. Turn the diamond grinding wheel or insert a new grinding wheel.
6. Insert the grinding wheel on the shaft.
 - ▷ The hole of the diamond grinding wheel has to be inserted centrally on the motor shaft.



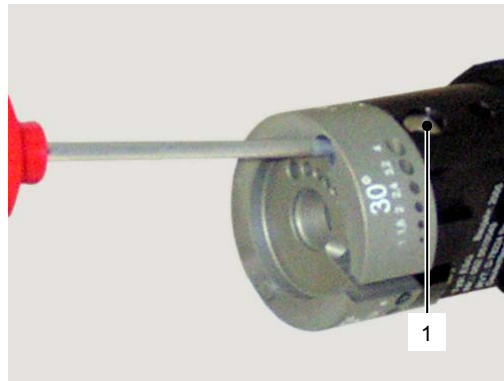
7. Tighten the Torx screw and assemble the ESG Plus grinding head to the motor.

7 Assembly of the Double-decker Kit ESG²

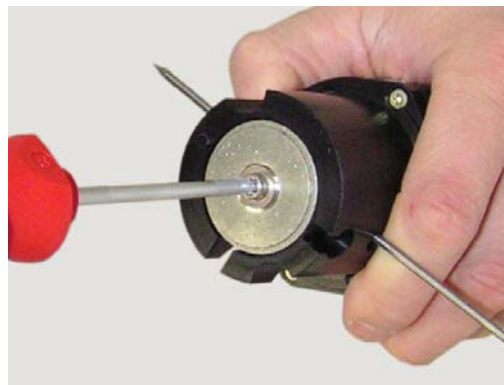
The Double-Decker Kit ESG² is not included in the standard scope of supply but is obtainable as extra accessory (see chapter 2.2.7, p. 7).

Disassembly of the ESG Plus head

1. Dismantle and remove the cylinder head screw with collar (M4x15) at the ESG Plus grinding head. Do **not** remove the arrest nut (1).
2. Remove the ESG Plus grinding head.



3. Slide a 2.4 mm pin through cross hole and motor shaft (rotation of the grinding wheel is prevented).
4. Loosen and remove the grinding wheel screw (cylinder head screw with washer, M4x6).



- Attach the shaft elongation and fasten.

Note For easier fastening of the shaft elongation we recommend to slide a screw driver through the cross hole of the shaft elongation.

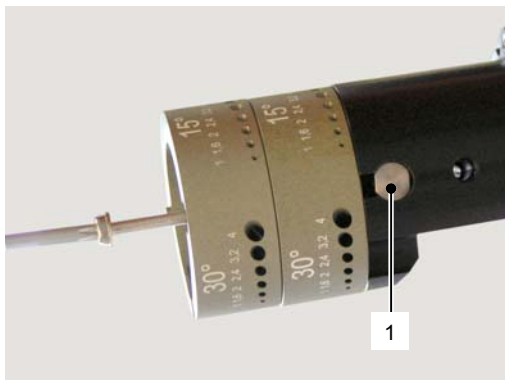


Fastening the Double-Decker Kit

- Attach the first grinding head.
- Attach the rough grinding wheel (Code 790 052 488) and fasten with the cylinder head screw with washer (M4x6).



- Attach the second grinding head.
- Attach the cylinder head screw with collar (M4x34) to the arrest nut (1).



8 Maintenance



Danger of death by electric shock!

Non-observance could result in death or critical injury.

- ▶ Before maintenance work remove the mains plug.

Time	Activity
Before starting work	<ul style="list-style-type: none"> ▶ The connection of the ESG Plus head to the motor has to be firm. ▶ The device may not be moist and may not be used in a humid environment. ▶ No unbalance in the grinding wheel may occur when the machine is switched on. ▶ Check whether ESG Plus head and/or the Torx screw sit firm, if necessary tighten. ▶ Check the power supply cable for damage. ▶ The tapped holes at the ESG Plus must always be free of dust, clean if necessary.
Weekly/daily	<ul style="list-style-type: none"> ▶ Remove dust from the inside of the housing, clean.

9 What to do if...?

9.1 Fault elimination

Fault	Possible cause	Remedy
Motor of the ESG Plus does not run.	Power cable defective.	▶ Replace the power cable.
	Motor defective.	▶ Replace the motor.
The ESG Plus head does not stick.	ESG Plus head is not correctly fastened to the motor flange.	▶ Tighten the Torx screw.
The diamond wheel does not rotate.	No tension.	▶ Examine tension.
	Engine defectively.	▶ Replace the motor.
Unbalance of the grinding wheel when started up.	Grinding wheel mounted incorrectly.	▶ Tighten or replace the grinding wheel immediately.

9.2 Servicing/customer service

For ordering spare parts, see the spare parts list, chapter 10, p. 19.

For the resolution of faults, please contact your branch office directly.
You can also contact directly our customer service address in Singen:

Orbitalum Tools GmbH

Freibühlstraße 19, D-78224 Singen

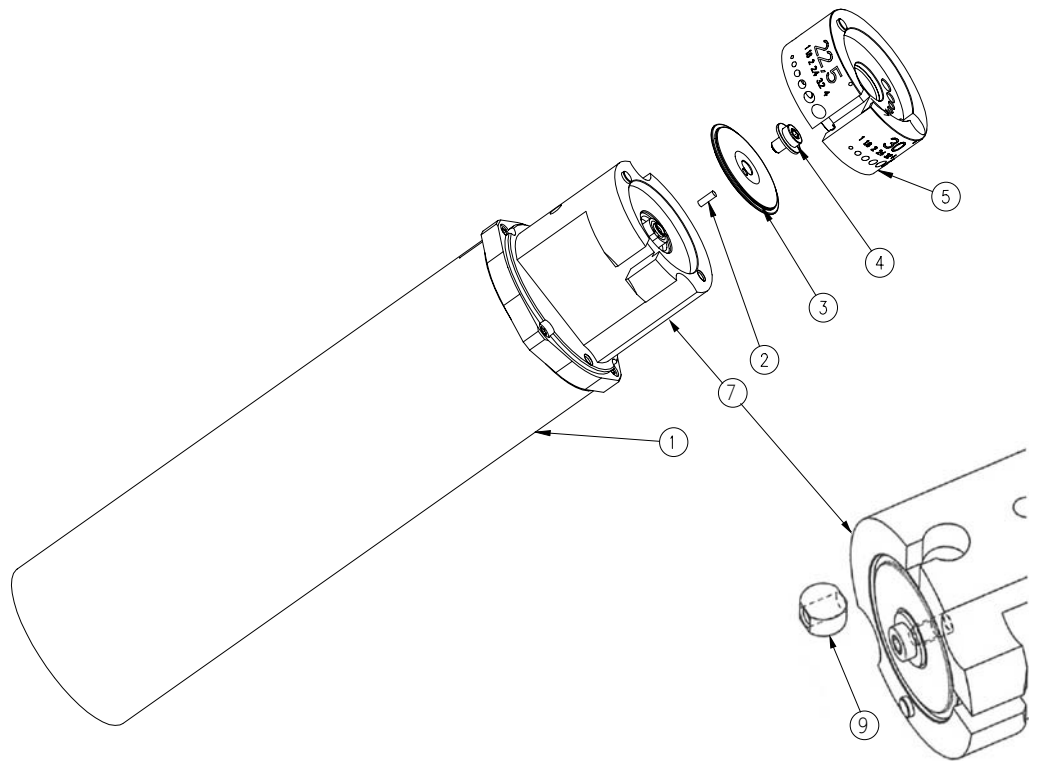
Phone: +49 (0) 77 31 / 792-764

Fax: +49 (0) 77 31 / 792-500

Please give the following details:

- Machine type: **ESG Plus**
- Machine number: *(see identification plate)*

10 Spare parts list



Item No.	Part Number	Quan.	Description
1	790 052 526	1	Electric motor 230 V, 50/60 Hz (only available together with motor flange, item no. 7)
	790 052 527	1	Electric motor 120 V, 50/60 Hz (only available together with motor flange, item no. 7)
-	790 052 528	2	Carbon brush 230 V
-	790 052 538	2	Carbon brush 120 V
2	790 052 533	1	Cylinder pin Ø 2
3	790 052 487	1	Diamond grinding wheel, standard
	790 052 488	1	Diamond grinding wheel, rough
4	790 052 531	1	Cylinder head screw with washer M4x6
5	790 052 530	1	Grinding head
7	790 052 535	1	Motor flange (only available together with electric motor, item no. 1)
9	790 052 534	1	Cylinder head screw M4x15 with nut M4 DIN 934

Without illustration: Spare parts to the Double-Decker Kit (ESG²)

Item No.	Part Number	Quan.	Description
-	790 052 530	1	Grinding head
-	790 052 488	1	Diamond grinding wheel, rough
-	790 052 536	1	Cylinder head screw with collar M4x34
-	790 052 537	1	Shaft elongation

Orbitalum Tools GmbH

Freibühlstraße 19
78224 Singen, Deutschland
Tel. +49 (0) 77 31 / 792-0
Fax +49 (0) 77 31 / 792-500
tools@orbitalum.com
www.orbitalum.com

An ITW Company

790 052 774_07/04 (12.07)
© Orbitalum Tools GmbH
D-78224 Singen 2007
Printed in Germany