



❖ Fast and sufficient preparation of customer specific applications.

## BRB 2

### Boiler Pipe Preparation Machines

#### Lightweight and robust Boiler Prep Machine.

For high-precision and reproducible weldprep profiles. Simultaneous facing, beveling, counterboring and axial turning of pipes made from high-alloy steel (stainless steel), low-alloy and carbon steel with the unique tool system QTC®. Designed for pipe end preparations and boiler pipe applications. Up to 3 tools can be used at the same time.

#### Advantages:

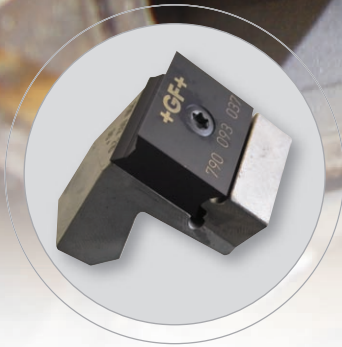
- Compact design for precise and reproducible weld prep profiles
- Maximum performance and lightweight
- High-performance coated tool bit with two cutting edges
- Quick clamping system for tools with easy adjustment
- Adjustable air outlet
- Ergonomic handling
- Tools adaptable on all BRB machines
- Low noise level
- Application optimised housing design

#### Your benefits:

- Increased productivity:
  - Reduced tool costs
  - Reduced manufacturing costs
  - Extremely durable
- Fast tool change
- Precise and reproducible weld prep profiles



❖ Ideal storage and transport case for the machine, tools and accessories.



A wide range of tool holder WH and multifunctional tools MFW: Two or four-sided tool bits with high-performance protective coating against tool wear. For different wall thicknesses and weld prep profiles.



**Retrofit kits for BRB 2:**  
These retrofit kits are available for both basic machines. For details see table below.



**Cutting lubrication KSS-TOP:**  
The water soluble, fully synthetic cooling fluid extends the tool life of the tool bits. Contains no hazardous substances.  
Pump sprayer (500 ml):  
**Code 790 060 226**  
Canister (10 l):  
**Code 790 060 227**



**Mobile air unit DWE 10:**  
Lubricator and air filter adjustable pressure range 0 - 10 bar. Flow max. 2.6 m<sup>3</sup>/min (92 cfm):  
**Code 790 093 060.**  
**Air hose with quick coupling** to connect the BRB machine with the mobile air unit DWE 10. Length: 4 m (15.748 in); ID 19.1 mm (0.752 in).  
**Code 790 093 061**

## Boiler Pipe Preparation Machines

Technical data	BRB 2 (Kit 1 + Kit 2)
Dimensions (with gear) approx. [mm]	340 x 260 x 50
Dimensions (with gear) approx. [inch]	13.38 x 10.24 x 19.68
Weight without tools approx. [kg/lbs]	3.6 / 7.9
Power [kW]	0.38
Air consumption [m <sup>3</sup> /min at 6 bar/90 psi]	0.7
Speed (max. idling speed) [min <sup>-1</sup> /rpm]	120
Vibration level in accordance with EN 28662, part 1 [m/s <sup>2</sup> ]	2.5
Sound level in the workplace approx. [dB (A)]	86 at idle-speed (average speed range) 82 under load
Mandrel-Ø [mm]	12.75 (Kit 1) / 19.05 (Kit 2)
Mandrel-Ø [inch]	0.502 (Kit 1) / 0.750 (Kit 2)
Tool retainer-Ø [mm]	50 / 19.05
Tool retainer-Ø [inch]	1.97 / 0.75

### Machine comes with

- 1 Boiler Pipe Preparation Machine BRB 2 (Kit 1 or Kit 2)
- 1 Durable storage and shipping case
- 1 Mandrel
- 3 Clamping sets (Kit 1) or 8 clamping sets (Kit 2)
- 1 Tool retainer
- 1 Cooling and cutting lubrication KSS-TOP (Code 790 060 226)
- 1 Tool set
- 1 Operating instructions with spare parts list

Application range	BRB 2 Kit 1	BRB 2 Kit 2
Code	<b>790 085 001</b>	<b>790 085 002</b>
Pipe ID [mm]	12.75 - 24	19.05 - 46
Pipe ID [inch]	0.502 - 0.945	0.750 - 1.811
Wall thickness with steel [mm]	2 - 8	2 - 8
Wall thickness with steel [inch]	0.079 - 0.315	0.079 - 0.315
Wall thickness stainless steel [mm] (max. OD approx. 40 mm)	2 - 6	2 - 6
Wall thickness stainless steel [inch] (max. OD approx. 1.57 inch)	0.079 - 0.236	0.079 - 0.236
Pipe materials: High-alloy steels (stainless steel, material No. 1.40-1.45 according to DIN 17455 and DIN 17456), low-alloy and non-alloy steel, copper. Others on request.		

Retrofit kit suitable to	BRB 2 Kit 1	BRB 2 Kit 2
Code	<b>790 085 006</b>	<b>790 085 005</b>
Comes with	7 Clamping sets 1 Mandrel with spindle	2 Clamping sets 1 Mandrel with spindle
Pipe ID [mm]	22.10 - 46	12.75 - 21.50
Pipe ID [inch]	0.870 - 1.810	0.500 - 0.850
Mandrel-Ø [mm/inch]	19.05 / 0.750	12.75 / 0.500

Stamp of distributor

The technical data are not binding. They are not warranted characteristics and are subject to change. Please consult our general conditions of supply.